

Datasheet

Issued: April 7, 2019
Edition: V1.0.0



Figure 1. iElegance Series 3S Smart Door Bell

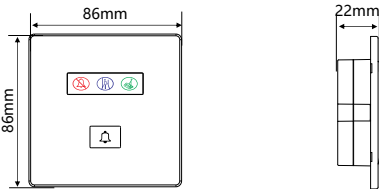


Figure 2. Dimensions - Front View Figure 3. Dimensions - Side View

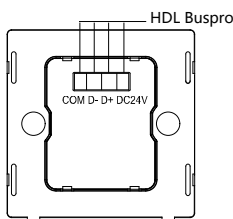


Figure 4. Back View

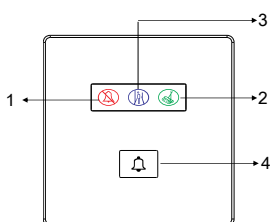


Figure 5. Front View

Overview

iElegance Series 3S Smart Door Bell (See Figure 1) is the matching product of HDL Hotel Room Management System. Installed by the door of the hotel room, the panel can be controlled by button panel or other matching devices in order to show the user's requirements. It can indicate DND status, ask for room-cleaning and used as doorbell, etc.

Functions

- Door Bell function, if DND is ON, it will be OFF
- DND display: Do not Disturb
- Ask for room-cleaning service
- Back light is adjustable
- Communication: HDL Buspro

Important Notes

- The panel must be installed in the wall box.
- Buspro cable - CAT5E or dedicated HDL Buspro cable.
- It is recommended to adopt Buspro connection - Series connection (hand-in-hand recommended).

Product Information

Dimensions - See Figure 2 - 3

Back view - See Figure 4

Front view - See Figure 5

Doorbell function can be controlled by other matching devices, for example, panel, or devices that can trigger "universal switch" command. For panel control, button type should be set as "universal switch", and the target should be set to the doorbell.

Universal switch numbers:

1. DND: Universal Switch Number 1
2. Clean: Universal Switch Number 2
3. Wait: Universal Switch Number 3
4. Door Bell for visitors: Universal Switch Number 5
- Module enable/disable: Universal Switch Number 6

Product installation and disassembly

Installation - See Figure 6 - 8

- Step 1. Install the wall box in the wall.
- Step 2. Fix the base panel into the wall box with screws.
- Step 3. Install the cover on the power interface. Make sure the base panel is connected with the panel cover tightly.

Disassembly - See Figure 9

- Step 1. Insert the panel gap with a slotted screwdriver.
- Step 2. Pry up the panel cover gently and take down the panel.

Safety Precautions



- The installation and commissioning of the device must be carried out by HDL or the organization designated by HDL. For planning and construction of electric installations, the relevant guidelines, regulations and standards of the respective country are to be considered.
- The device should be installed in wall box. HDL does not take responsibility for all the consequences caused by installation and wire connection that are not in accordance with this document.
- Please do not privately disassemble the device or change components, otherwise it may cause mechanical failure, electric shock, fire or body injury.
- Please resort to our customer service department or designated agencies for maintenance service. The warranty is not applicable for the product fault caused by private disassembly.

Package Contents

HDL-MPB03.48*1 / Datasheet*1 / Screw*2

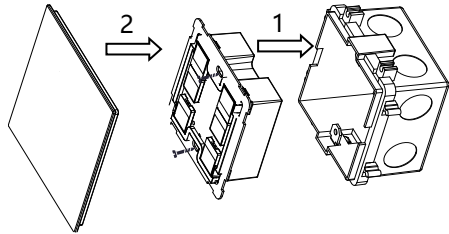


Figure 8. Panel module Figure 7. Power interface Figure 6. Wall box

Figure 6 – 8. Installation

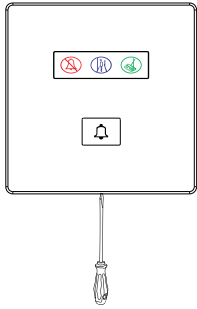


Figure 9. Disassembly

Technical Data

Basic Parameters

Working voltage	12~30V DC
Working current	25mA/24V DC
Communication	HDL Buspro
Cable diameter of Buspro terminal	0.6-0.8mm

External Environment

Working temperature	-5°C~45°C
Working relative humidity	≤90%
Storage temperature	-20°C~60°C
Storage relative humidity	≤93%

Specifications

Dimensions	86×86×22 (mm)
Net weight	98g
Housing material	ABS, Aluminum
Installation	Wall box (See Figure 6 - 8)
Protection rating (Compliant with EN 60529)	IP20

Name and Content of Hazardous Substances in Products

Components	Hazardous substances					
	Lead (Pb)	Mercury (Hg)	Cadmium (Cd)	Chromium VI (Cr (VI))	Poly-brominated biphenyls (PBB)	Poly-brominated diphenyl ethers (PBDE)
Plastic	o	o	o	o	o	o
Hardware	o	o	o	o	-	-
Screw	o	o	o	x	-	-
Solder	x	o	o	o	-	-
PCB	x	o	o	o	o	o
IC	o	o	o	o	x	x

The symbol “-” indicates that the hazardous substance is not contained.

The symbol “o” indicates that the content of the hazardous substances in all the homogeneous materials of the component is below the limit requirement specified in the Standard IEC62321-2015.

The symbol “x” indicates that the content of the hazardous substance in at least one of the homogeneous materials of the part exceeds the limit requirement specified in the Standard IEC62321-2015.

HDL Buspro Cable Guide

HDL Buspro	HDL Buspro Cable	CAT5/CAT5E
DATA+	Yellow	Blue/Green
DATA-	White	Blue white/Green white
COM	Black	Brown white/Orange white
24V DC	Red	Brown/Orange

Technical support

E-mail: support@hdlautomation.com

Website: <https://www.hdlautomation.com>

©Copyright by HDL Automation Co., Ltd. All rights reserved.
Specifications subject to change without notice.